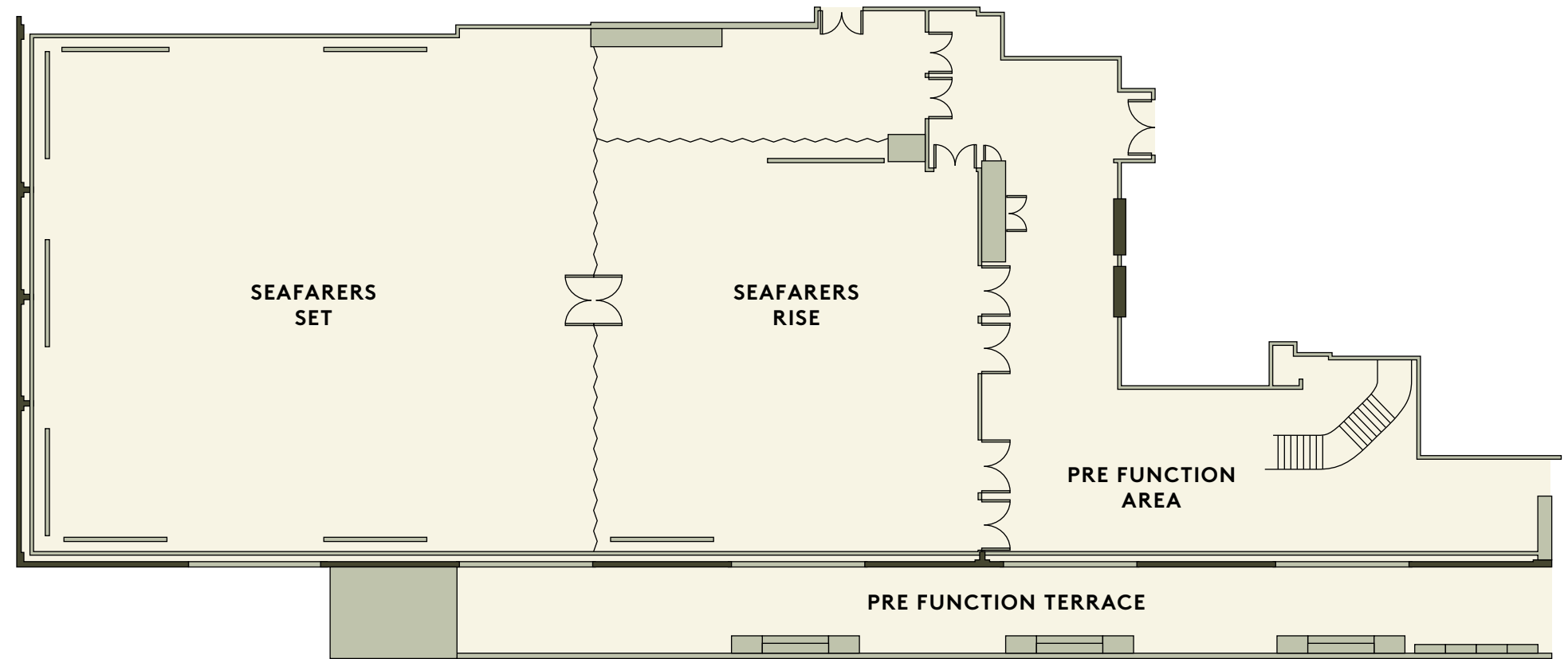


SEAFARERS BALLROOM

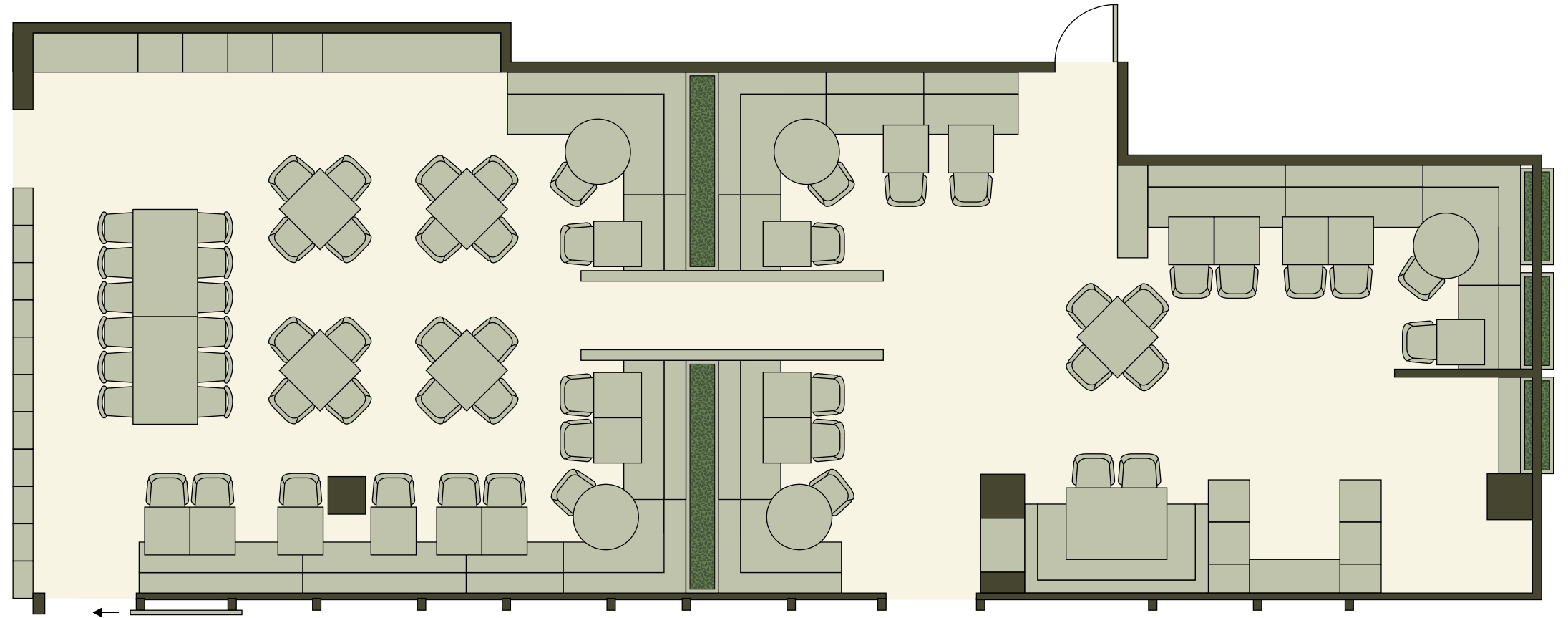
1,000 SQ M | 10,764 SQ FT



	SQ M	SQ FT	CEILING HEIGHT	ROOM DIMENSIONS	ROOM DIMENSIONS	MAX CAPACITY	BANQUET OVALS 10	BANQUET OVALS 8	BANQUET OVALS 6	THEATRE	CLASSROOM 2 PER 183CM
SEAFARERS BALLROOM	1,000	10,764	10M / 33FT	23.5 x 42.8M	7 x 140FT	900	650	520	400	940	450
SEAFARERS RISE	332	3,573	10M / 33FT	23.5 x 17.5M	7 x 57FT	260	250	200	110	259	123
SEAFARERS SET	614	6,609	10M / 33FT	23.5 x 25.3M	7 x 82FT	600	350	280	264	576	285
PRE FUNCTION	385	4,144	—	—	—	—	—	—	—	—	—
PRE FUNCTION TERRACE	220	2,368	—	—	—	—	—	—	—	—	—

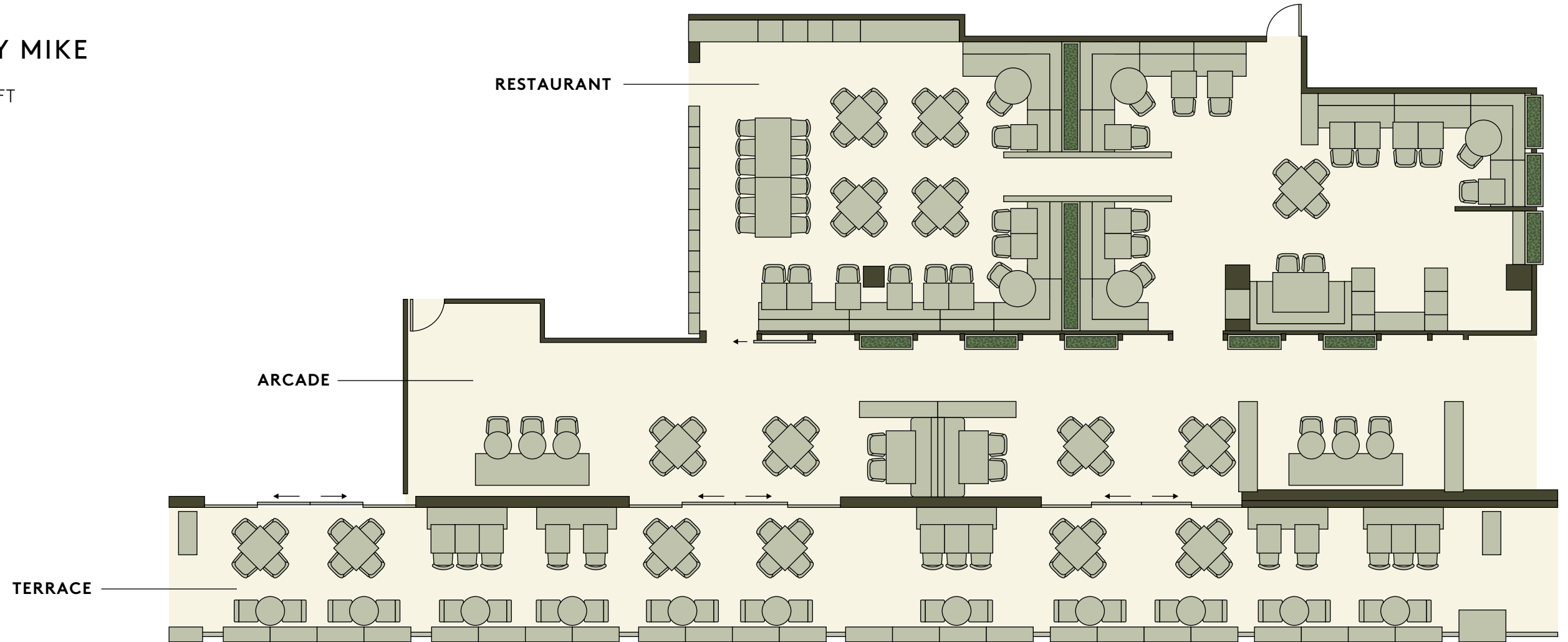
FROM HERE BY MIKE RESTAURANT

205 SQ M | 2,026 SQ FT



FROM HERE BY MIKE

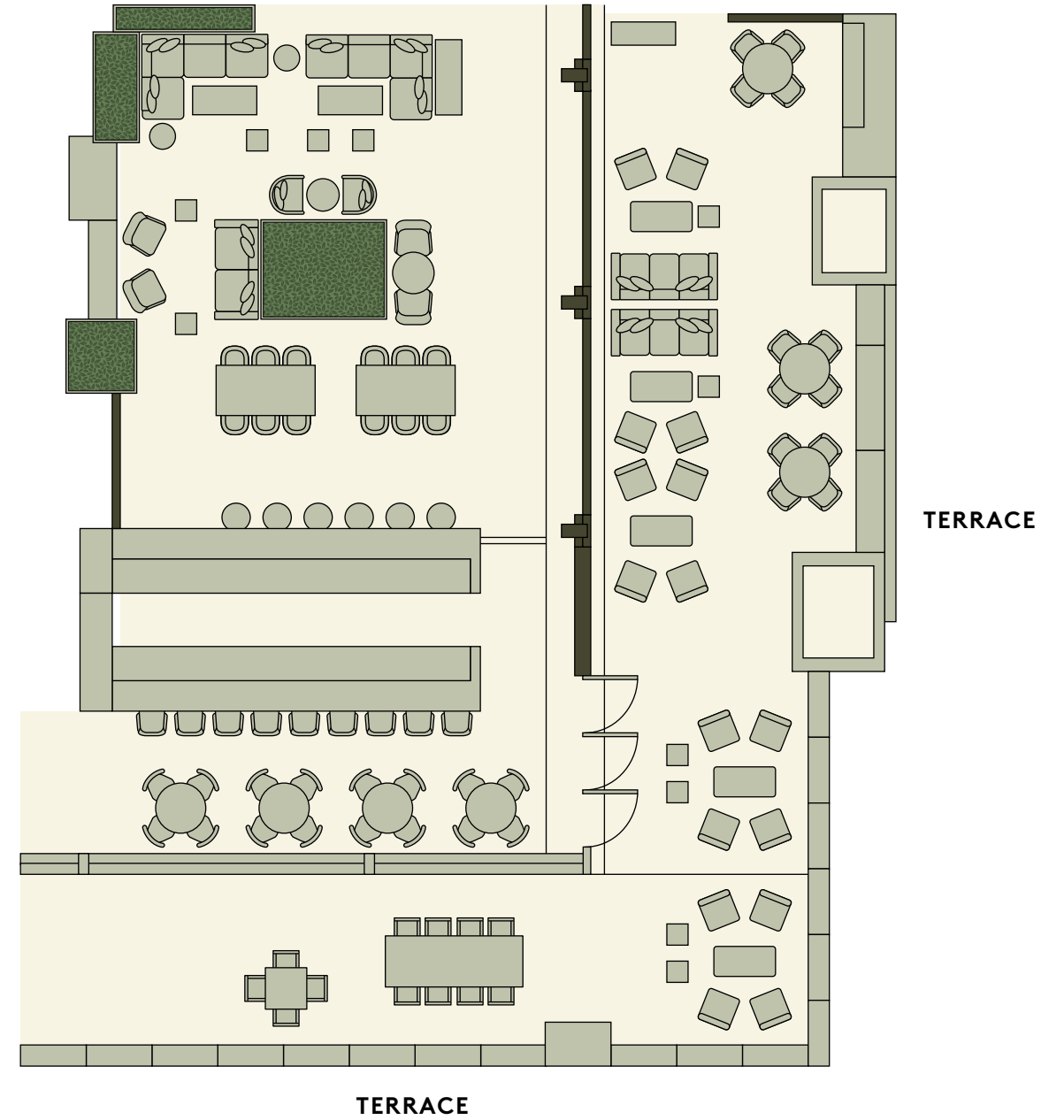
485 SQ M | 522.5 SQ FT



	SQ M	SQ FT
RESTAURANT	205	2,026
ARCADE	150	1,614
TERRACE	130	1,400

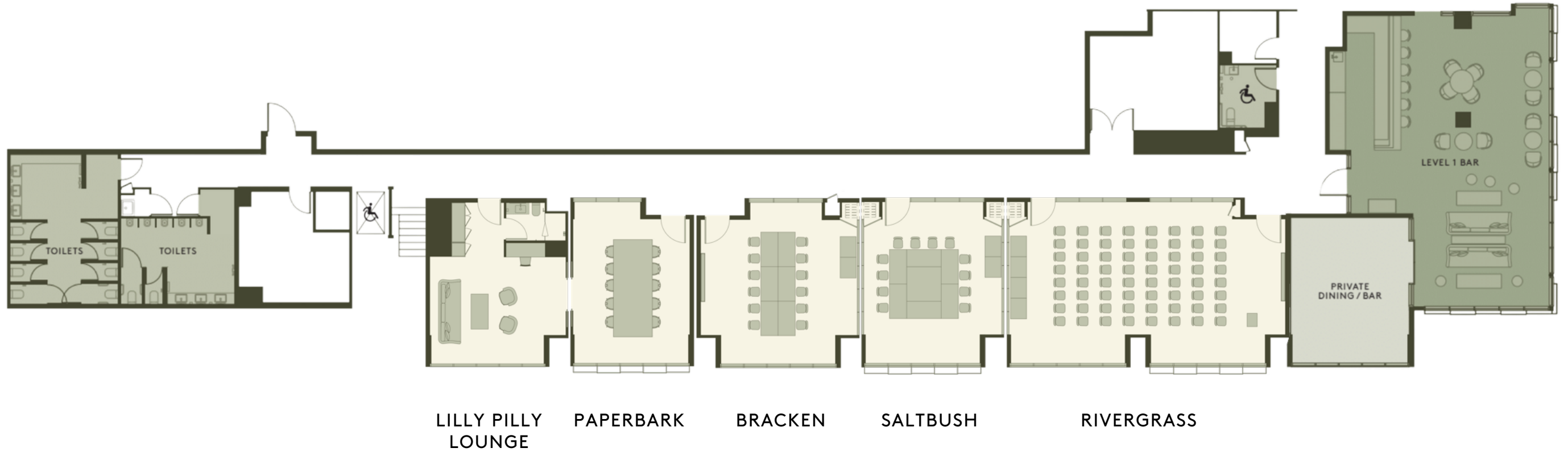
CRANE BAR & LOUNGE

545 SQ M | 5,866 SQ FT



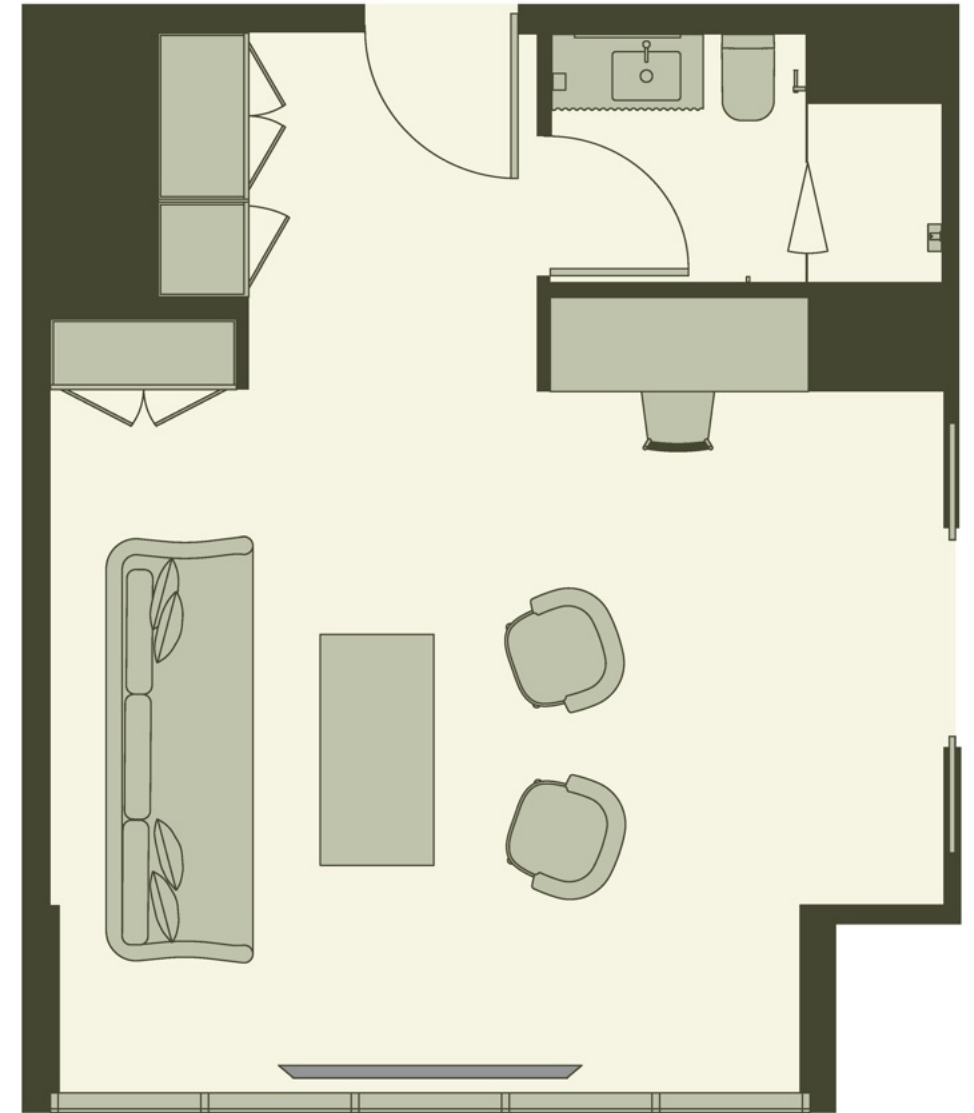
	SQ M	SQ FT
INSIDE	345	3,713
OUTSIDE	190	2,045

LEVEL 1 MEETING SPACES



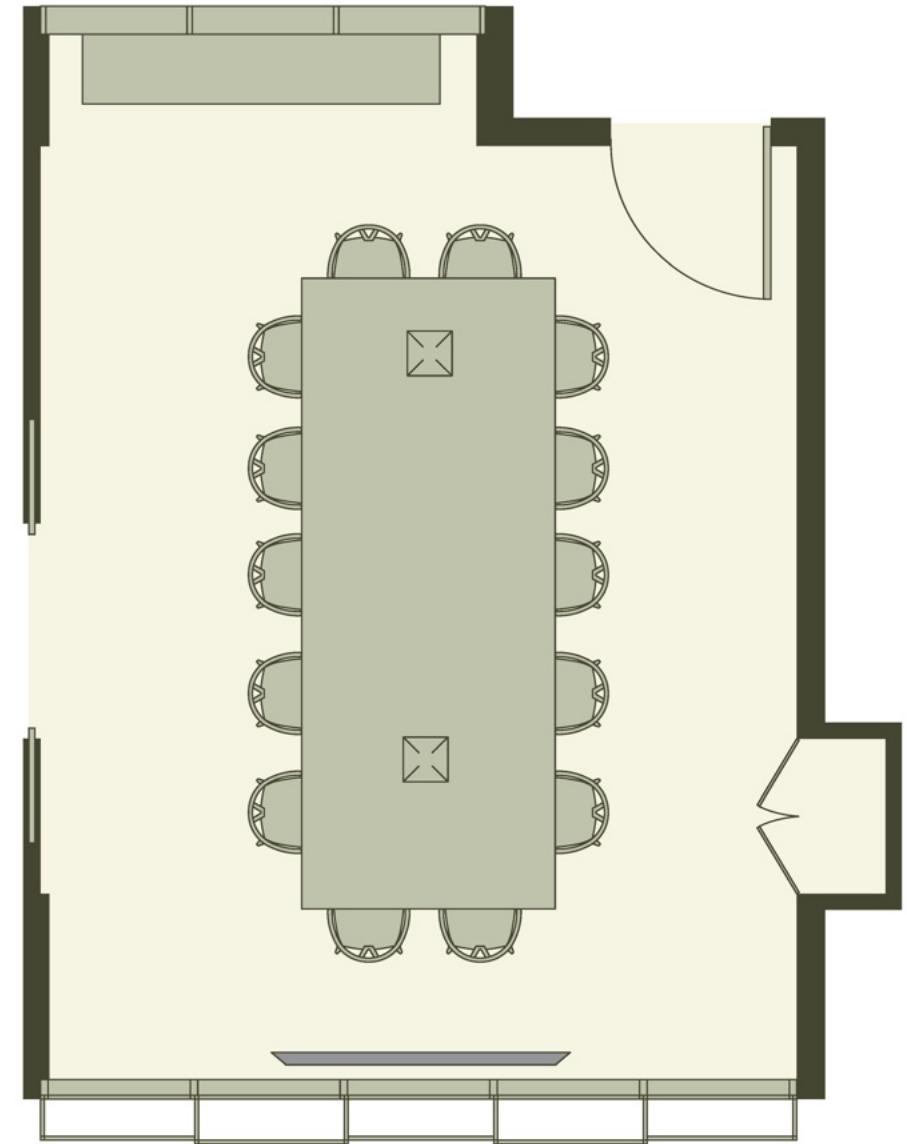
LILLY PILLY LOUNGE

39 SQ M | 420 SQ FT



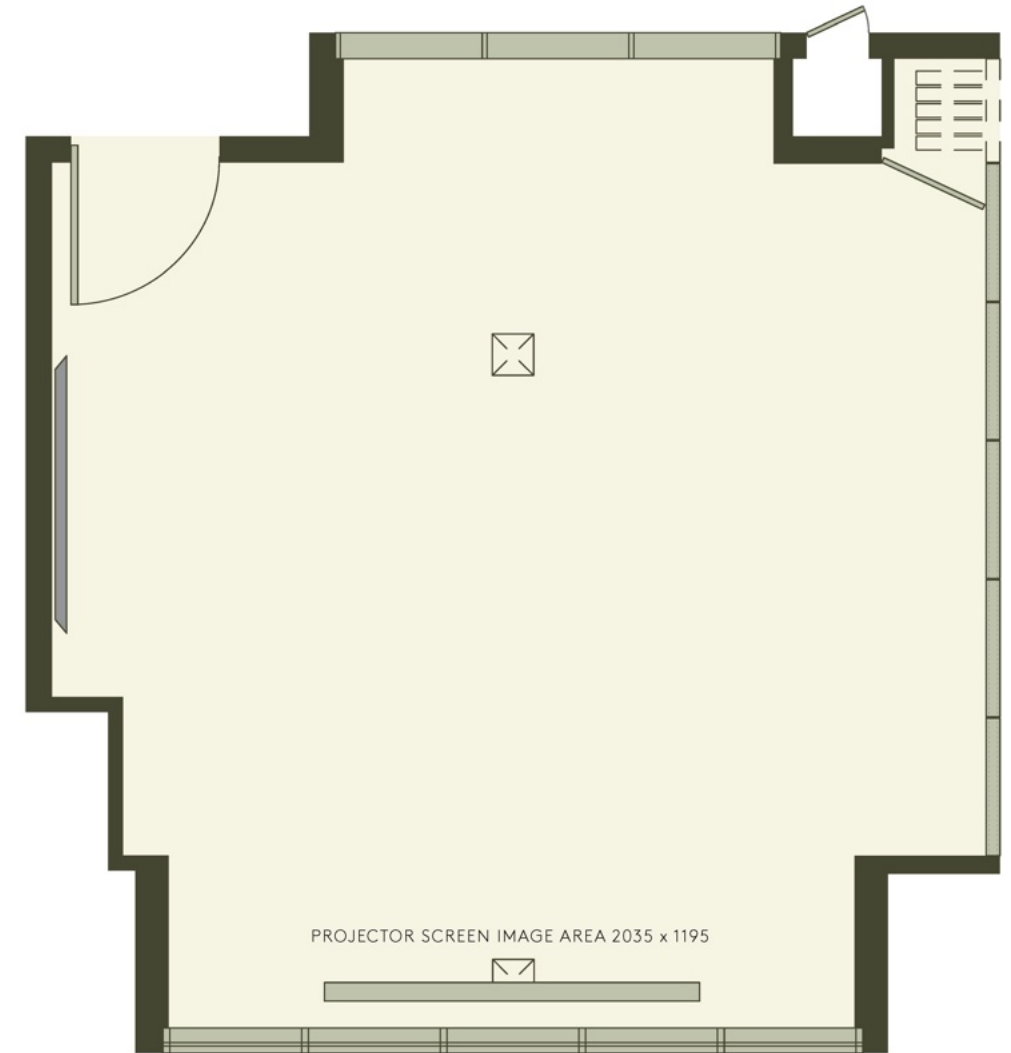
PAPERBARK

35 SQ M | 377 SQ FT



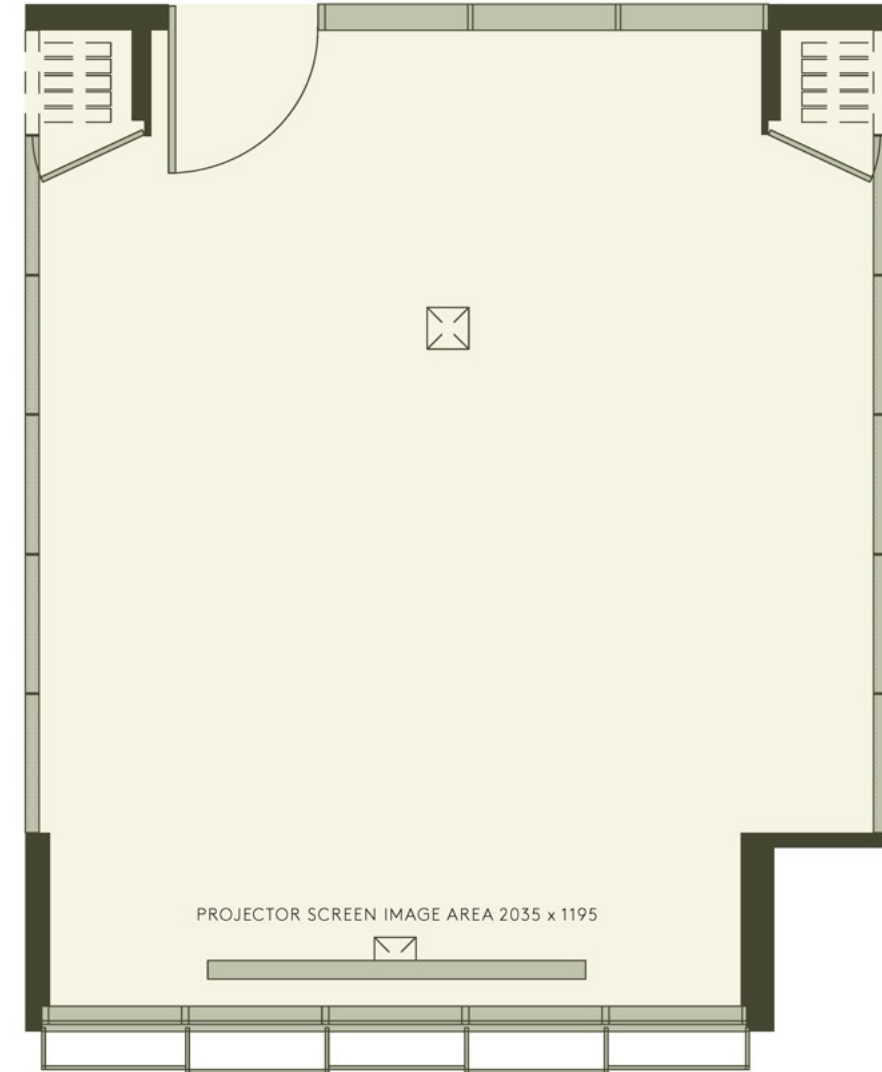
BRACKEN

46 SQ M | 495 SQ FT



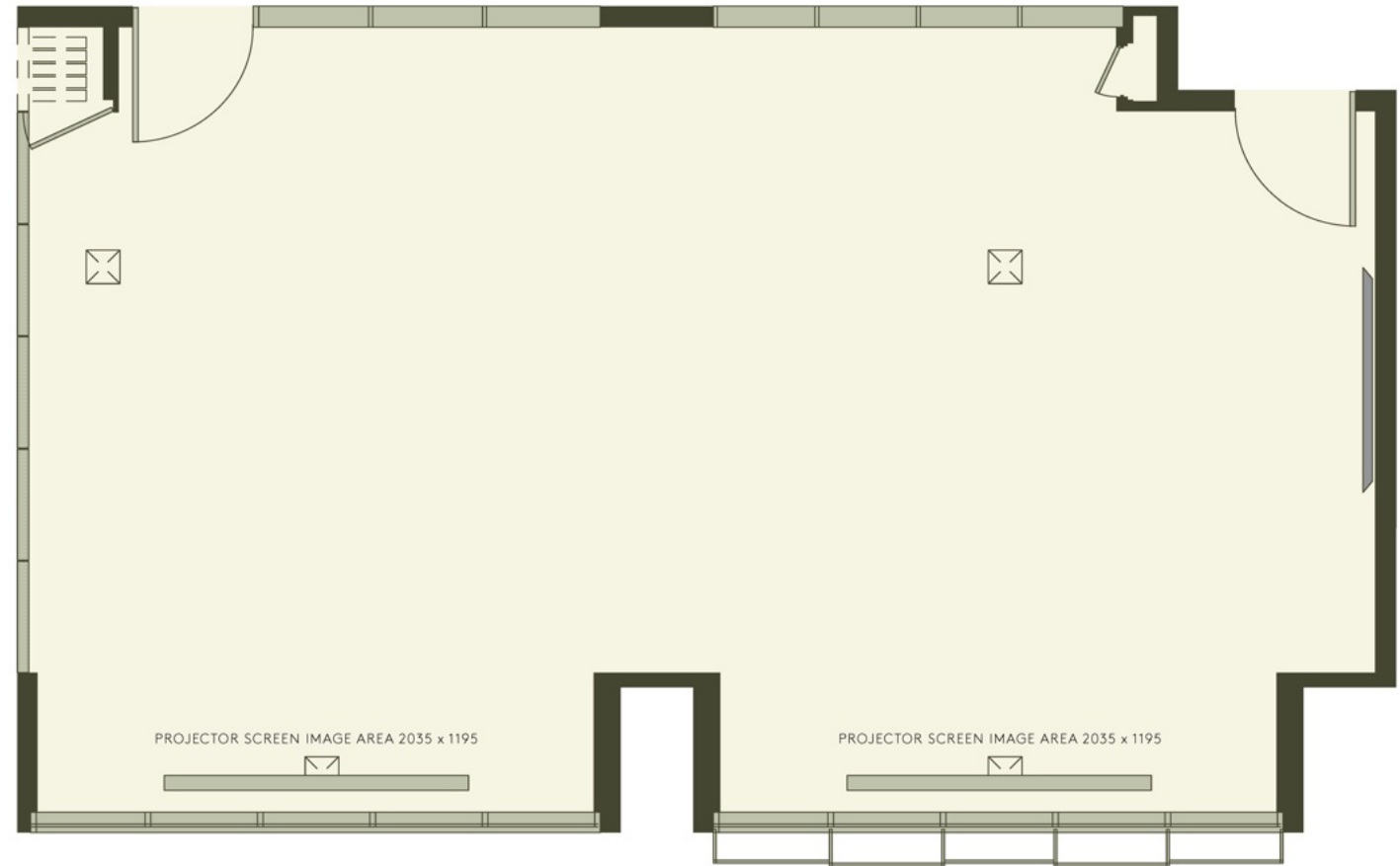
SALTBUSH

40 SQ M | 430 SQ FT



RIVERGRASS

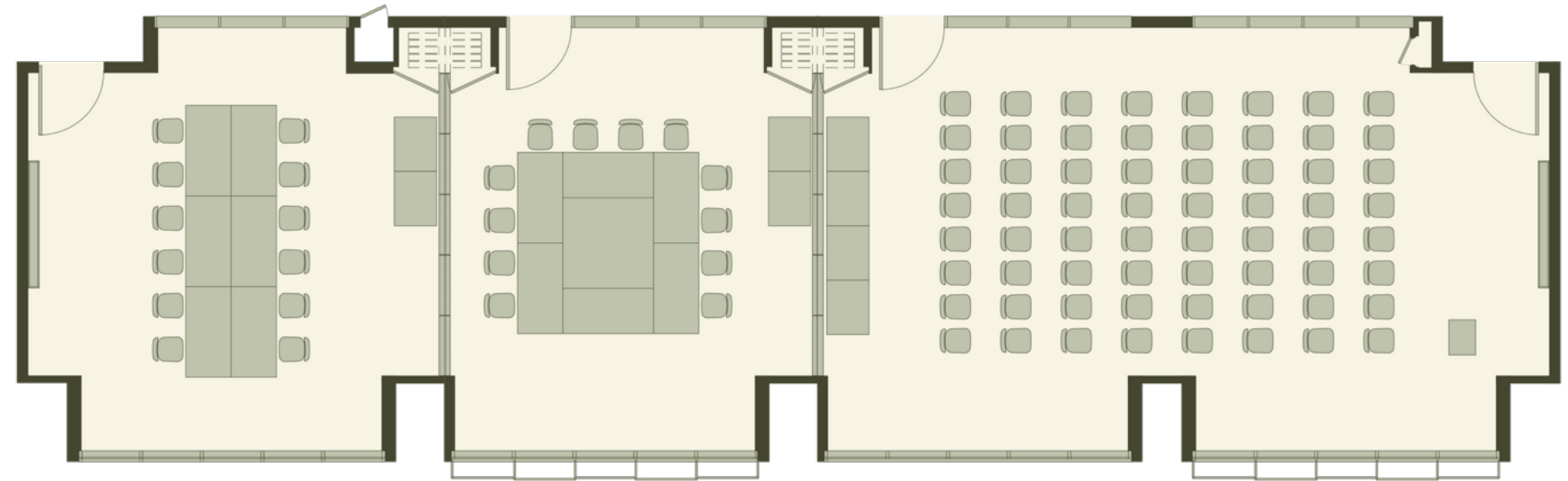
77 SQ M | 829 SQ FT



RIVERGRASS, SALTBUSH & BRACKEN

163 SQ M | 1,754 SQ FT

THREE ROOMS COMBINED, OPERABLE DOORS OPEN



BRACKEN

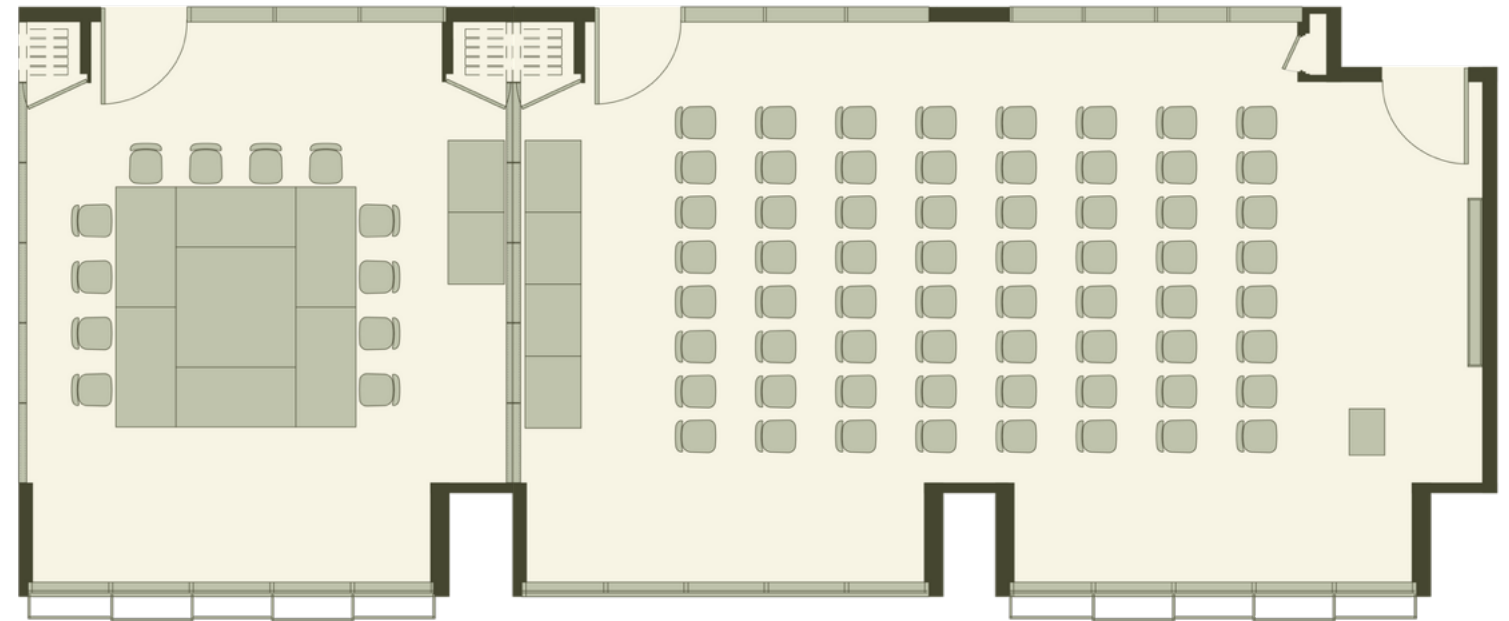
SALTBUSH

RIVERGRASS

RIVERBUSH & SALTBUSH

117 SQ M | 1,259 SQ FT

TWO ROOMS COMBINED, OPERABLE DOORS OPEN



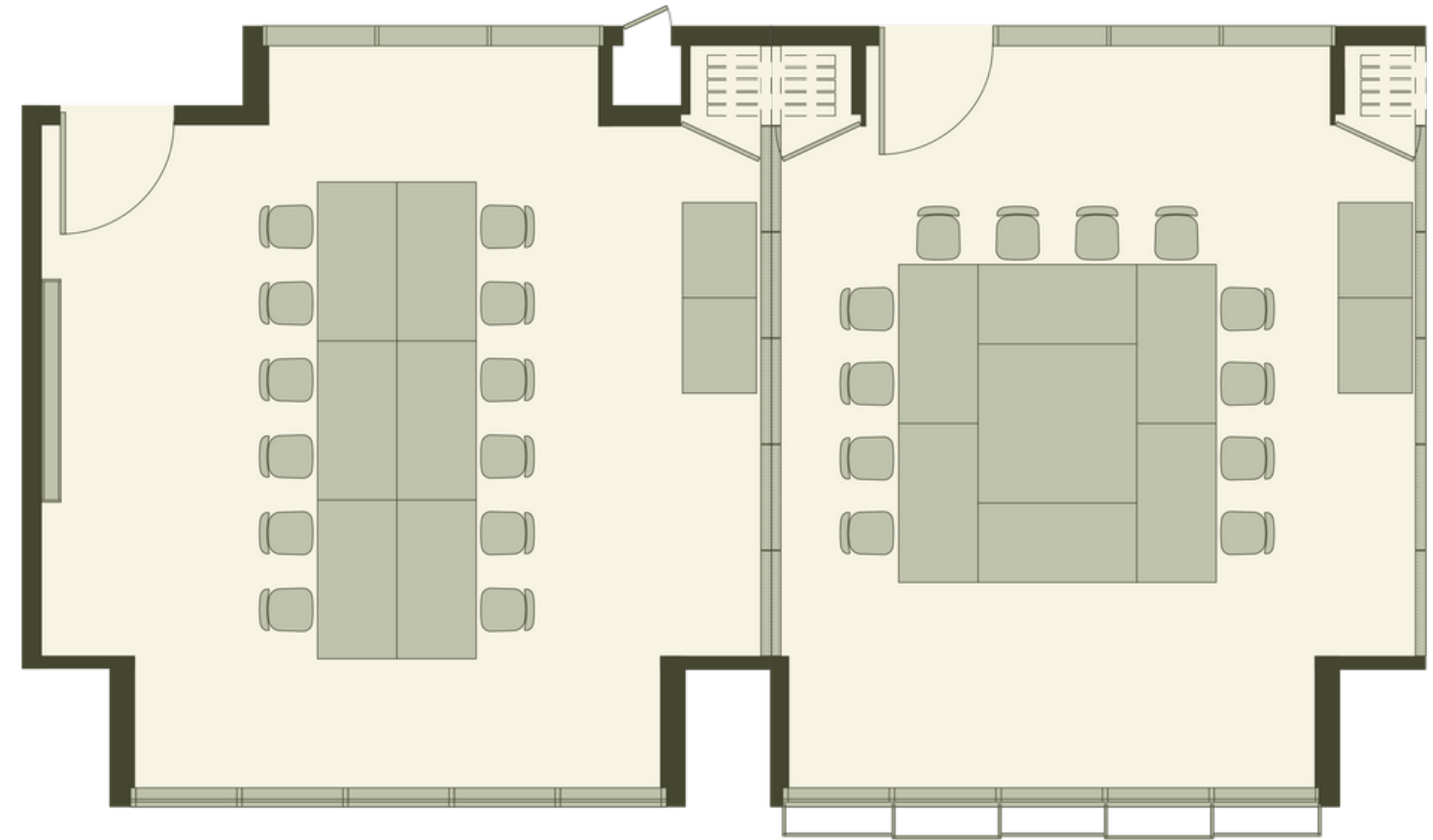
SALTBUSH

RIVERGRASS

BRACKEN & SALTBUSH

86 SQ M | 926 SQ FT

TWO ROOMS COMBINED, OPERABLE DOORS OPEN



BRACKEN

SALTBUSH

29 SQ M | 312 SQ FT

