



1

HOTEL
Melbourne

SEAFARERS PRECINCT
—
ADAPTIVE REUSE
OF GOODS SHED NO.5

SCROLL TO VIEW



CONTENT

SEAFARERS PRECINCT

SEAFARERS REST

MISSION TO SEAFARERS

GOODS SHED NO.5

MALCOLM MOORE CRANE

THE '1' SCULPTURE

1 HOTEL MELBOURNE

GROUND FLOOR MAP

ART PROGRAM

FROM HERE BY MIKE

CRANE BAR & LOUNGE

NEIGHBOURS CAFÉ

ADAPTIVE REUSE

SCROLL TO VIEW



WELCOME TO THE SEAFARERS PRECINCT

This land holds profound significance. For tens of thousands of years, it was a sacred meeting ground for the Wurundjeri Woi Wurrung people of the Eastern Kulin Nation. Then it witnessed over a century of maritime trade and commerce. After sitting dormant for 50 years, it has returned to its roots as a gathering space—now home to Australia's first 1 Hotel and welcoming visitors from around the world to experience nature-inspired luxury, a curated art program, and connection to Country.



SEAFARERS REST PARK

Melbourne’s first new riverside park in 20 years. This 3,500sqm green oasis honours maritime and Indigenous heritage through thoughtful design by OCULUS in collaboration with the City of Melbourne. The park offers open lawns, kids’ play spaces, wildlife habitat hollows and an events deck. With maritime artefacts, accessible paths and native landscaping, this waterfront sanctuary invites you to slow down, gather and connect.

- 1

Goods Shed No.5
- 2

Malcolm Moore Crane
- 3

Mission To Seafarers
- 4

‘1’ Sculpture
- 5

Habitat Hollows
- 6

Kids Play
- 7

Open Lawns
- 8

Events Deck
- 9

Propeller
- 10

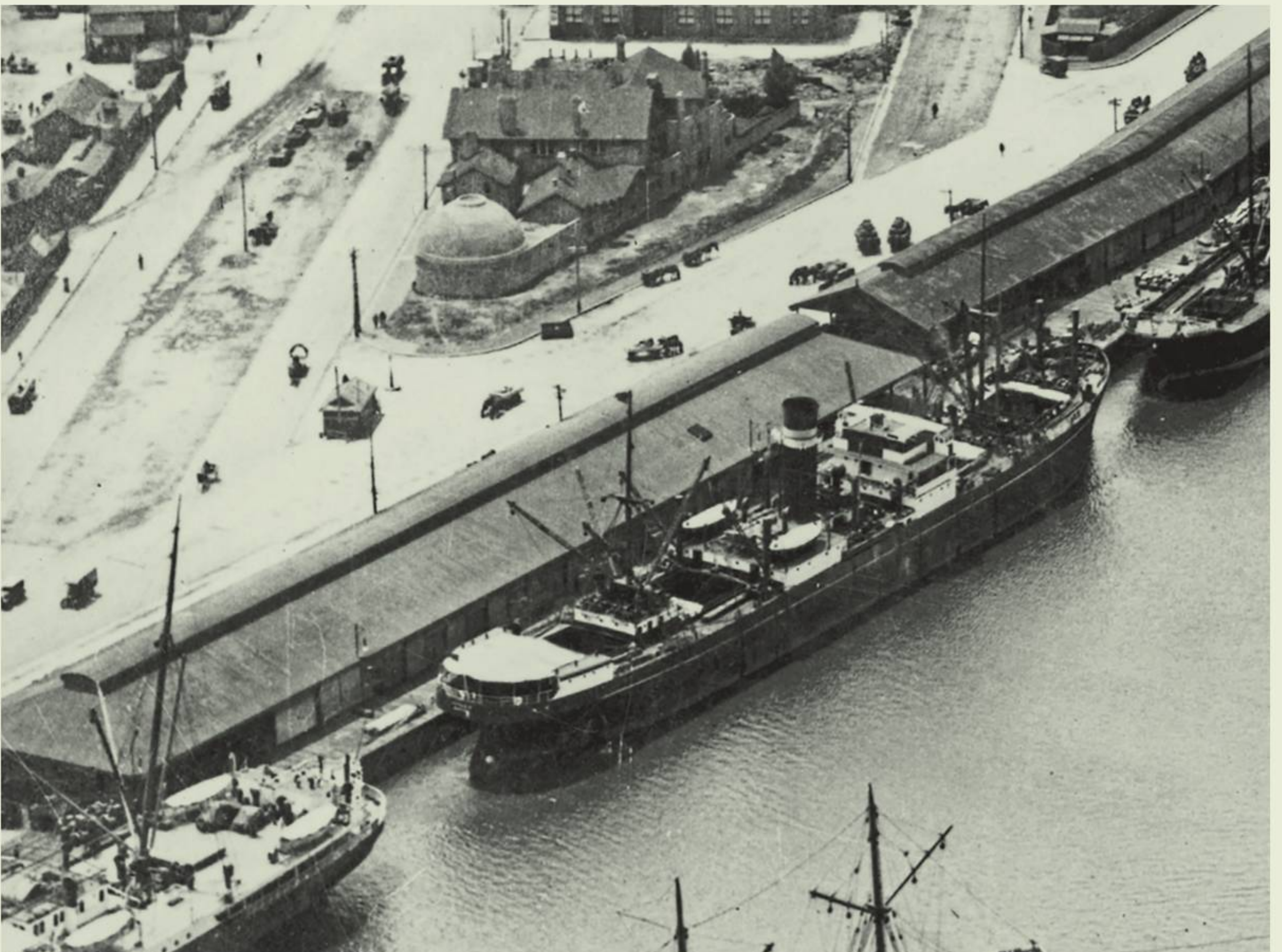
Anchor



GOODS SHED NO.5

Built in 1894 and modernised in 1942, this heritage structure was once the beating heart of North Wharf, where 175,000 tonnes of cargo passed through annually. Stevedores, seafarers and maritime businesses created a thriving trade hub until containerisation ended the era in the 1970s. Today, the shed houses over 2,000 carefully salvaged heritage items including original trusses, window frames and bluestone pavers, preserving the spirit of Melbourne's original gateway to the world.

Goods Shed No. 5 and Mission to Seafarers
Australian Wharf, 1920's



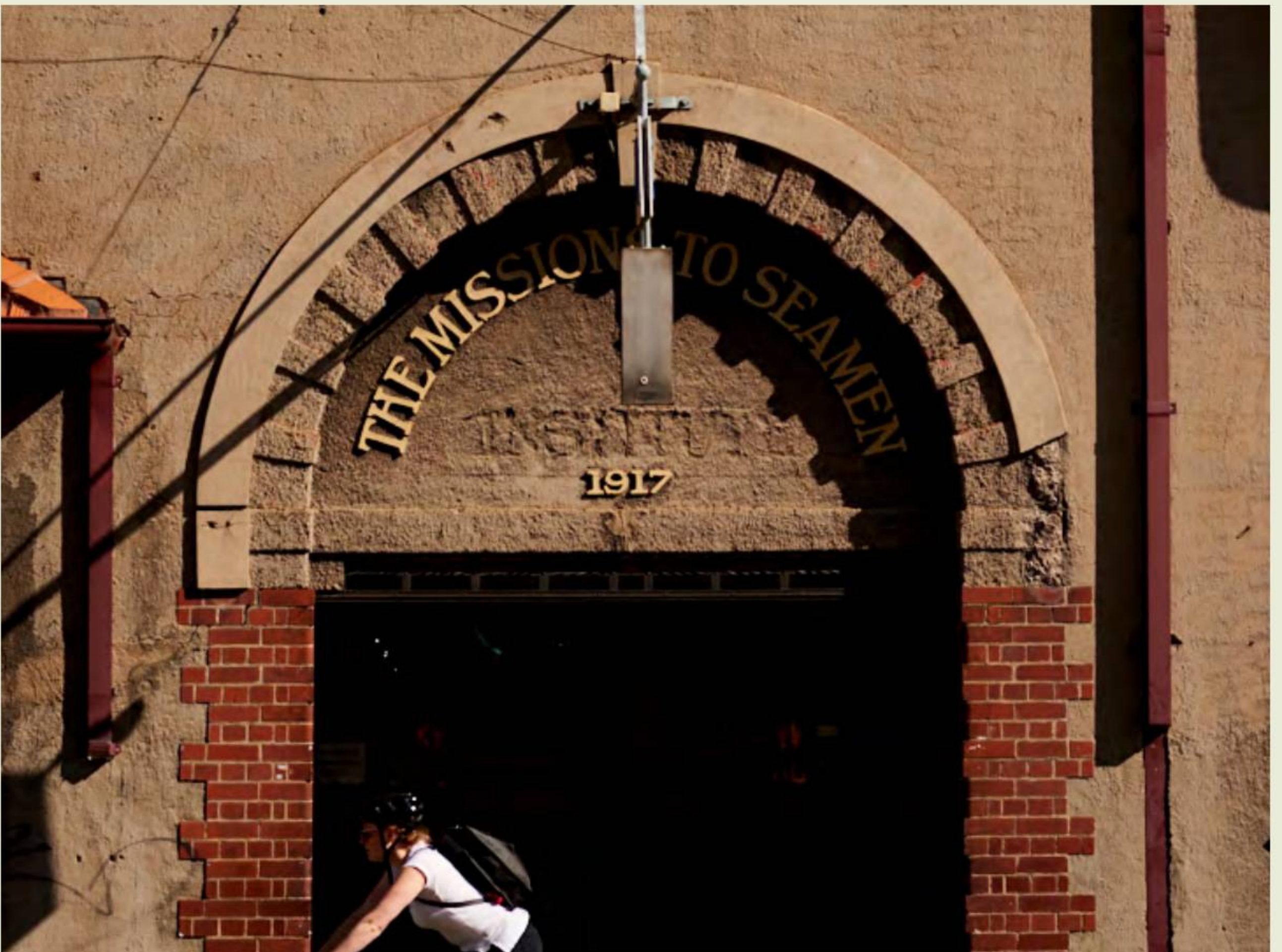
MALCOLM MOORE CRANE

The last remaining crane on the Yarra River-Birrarung from the pre-containerisation era. Built by Malcolm Moore Pty Ltd in 1942, this 3-tonne semi-portable electric crane was originally constructed for WWII efforts, assisting the Royal Navy before returning to Melbourne as the first of its kind on Australian wharves. Using the shed's edge for support, this travelling crane transformed North Wharf operations, improving cargo handling efficiency and safety while training generations of crane drivers throughout its working life.



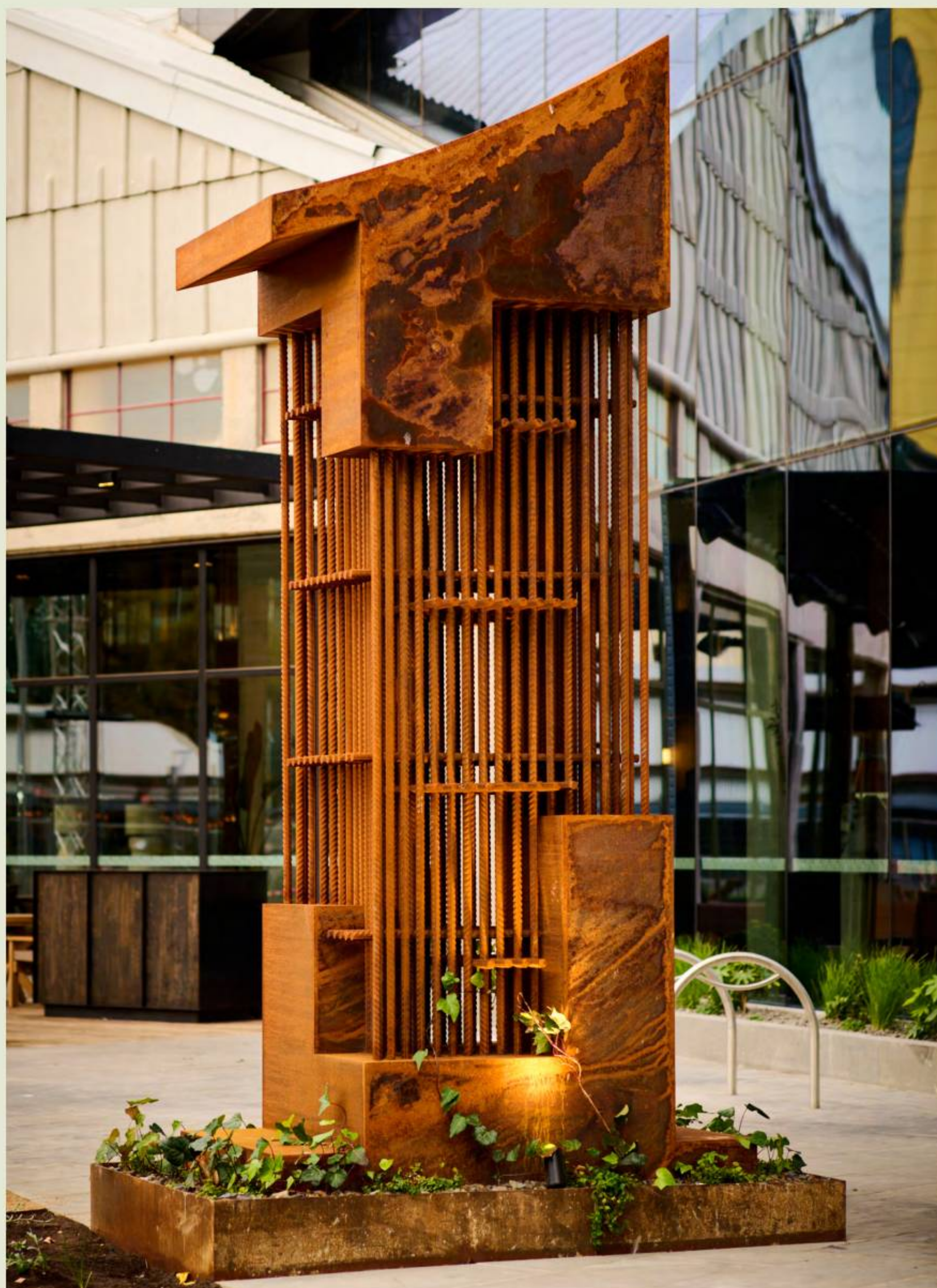
MISSION TO SEAFARERS

Since 1917, the Mission to Seafarers has been a vital haven for maritime workers enduring harsh conditions and long months at sea. The Mission's Chaplain visited every ship along North Wharf, offering companionship and support to all, from captains to kitchen hands. The Mission continues its work today while welcoming visitors to discover its incredible interior featuring a historic chapel and open courtyard—enter via Wurundjeri Way.



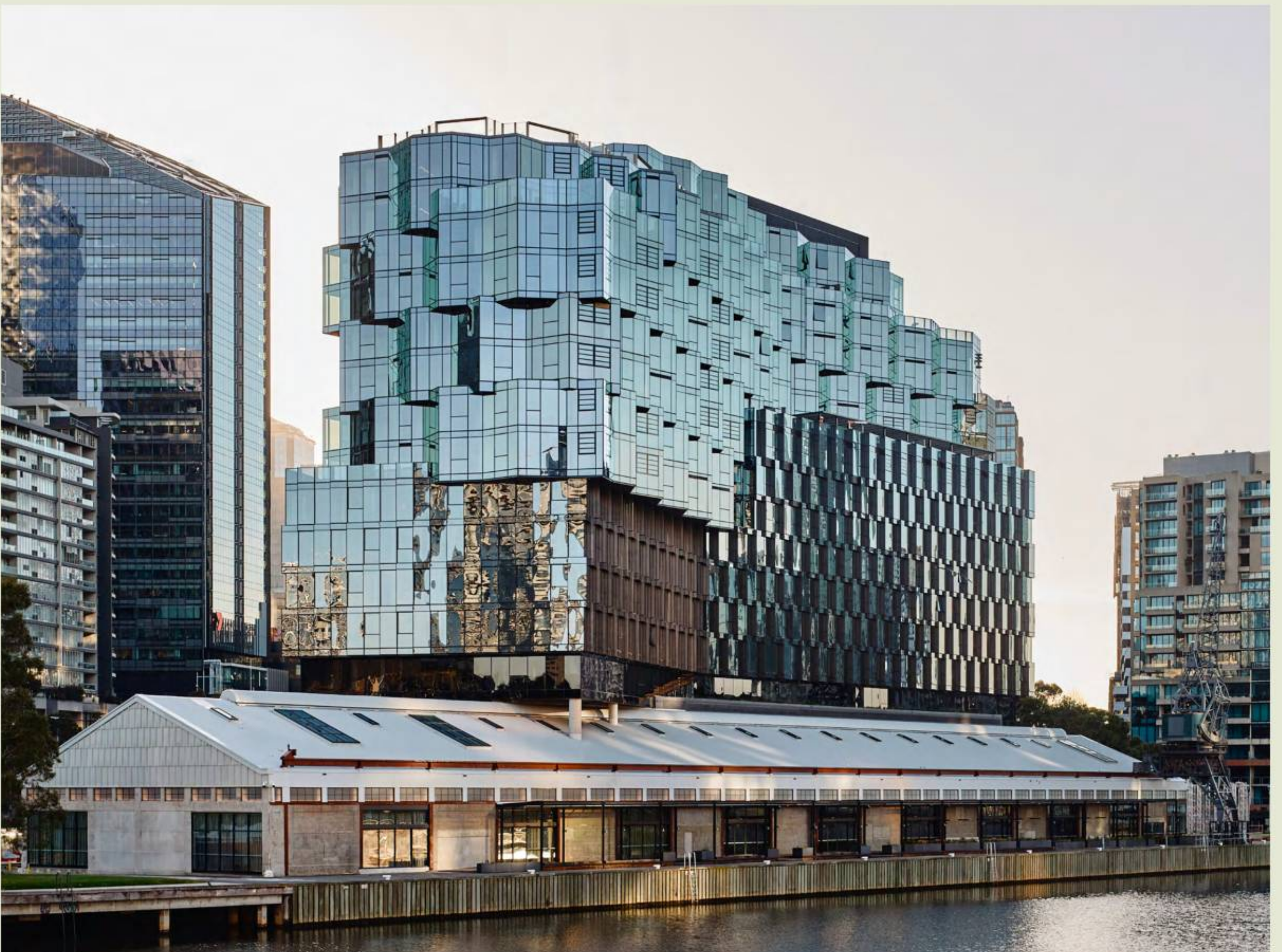
THE '1' SCULPTURE

The distinctive '1' sculpture was created specifically for 1 Hotel Melbourne by Nonda Katsalidis, Australia's leading architect renowned for MONA museum and Australia 108. Crafted in his Macedon Ranges studio using upcycled steel, the piece features industrial characteristics that intentionally echo the trusses and heritage features of the Goods Shed No.5. Plantings at the base will gradually weave through and envelop the structure, embodying 1 Hotel's nature-inspired ethos as vegetation reclaims the industrial form.



ARCHITECTURE

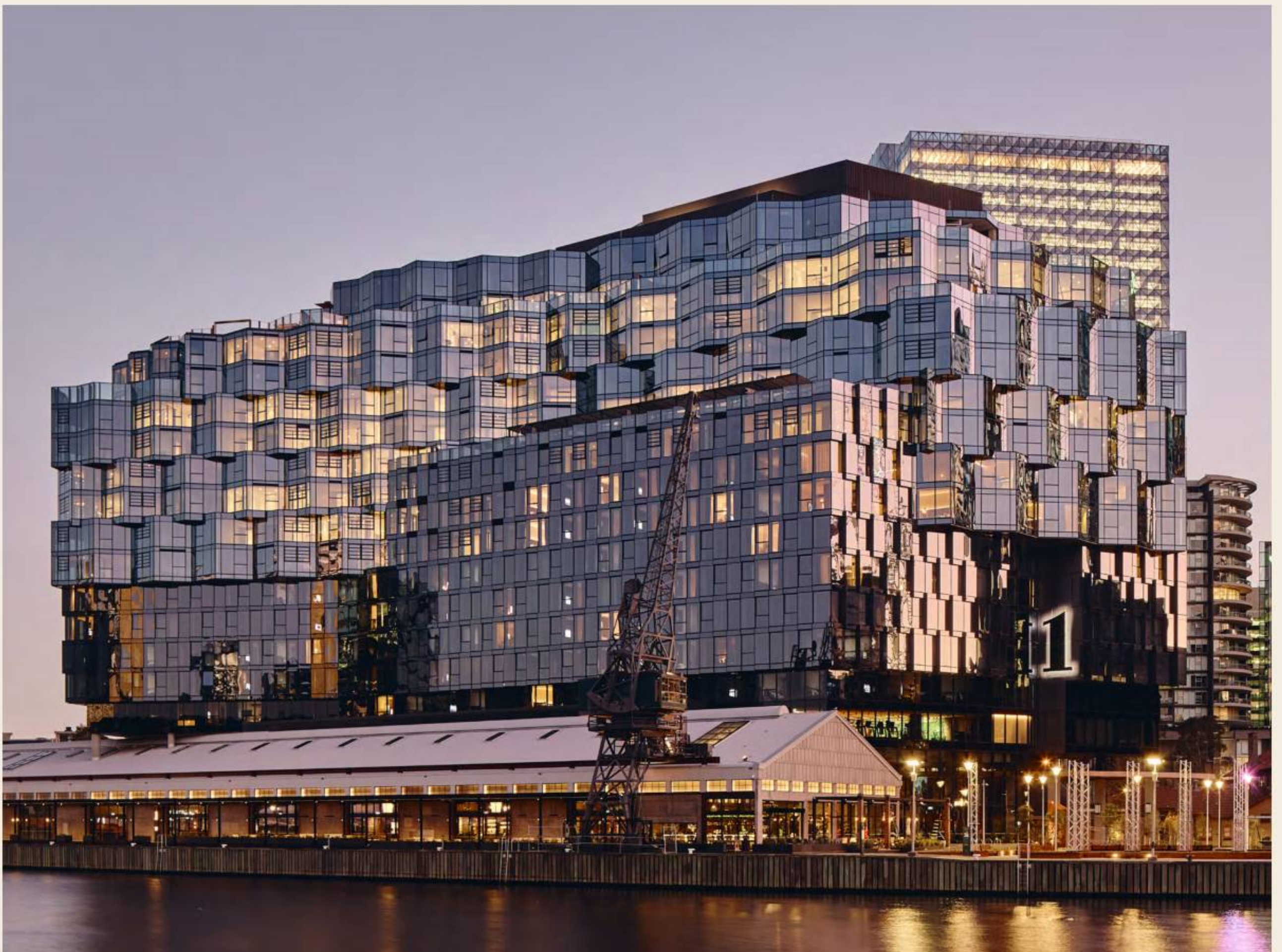
Look up and you'll see Melbourne's newest masterpiece—over 4,000 glass panels assembled like a giant jigsaw puzzle, creating the striking architecture of 1 Hotel & Homes Melbourne. Designed by Nonda Katsalidis in collaboration with Nicky Drobis of FK, it's been hailed as “the most complex facade this city has seen since Federation Square.” The design draws inspiration from its riverfront setting—the lower levels echo the Goods Shed No.5's angular panels while upper levels reflect the flowing Yarra River-Birrarung.





1 HOTEL MELBOURNE

Australia's first 1 Hotel—a mission-driven luxury lifestyle brand that redefines hospitality by letting nature back in. This nature-inspired sanctuary features 277 guest rooms with river, city and park views, each detailed with lush greenery and reclaimed timber finishes. Within, discover From Here by Mike restaurant, Crane Bar & Lounge, Australia's first Bamford Wellness Spa and over 1,200sqm of event spaces. Throughout the hotel, 7,000+ plants and 4,500sqm of reclaimed timber prove that luxury and sustainability can coexist.





GROUND FLOOR

ART PROGRAM WALK

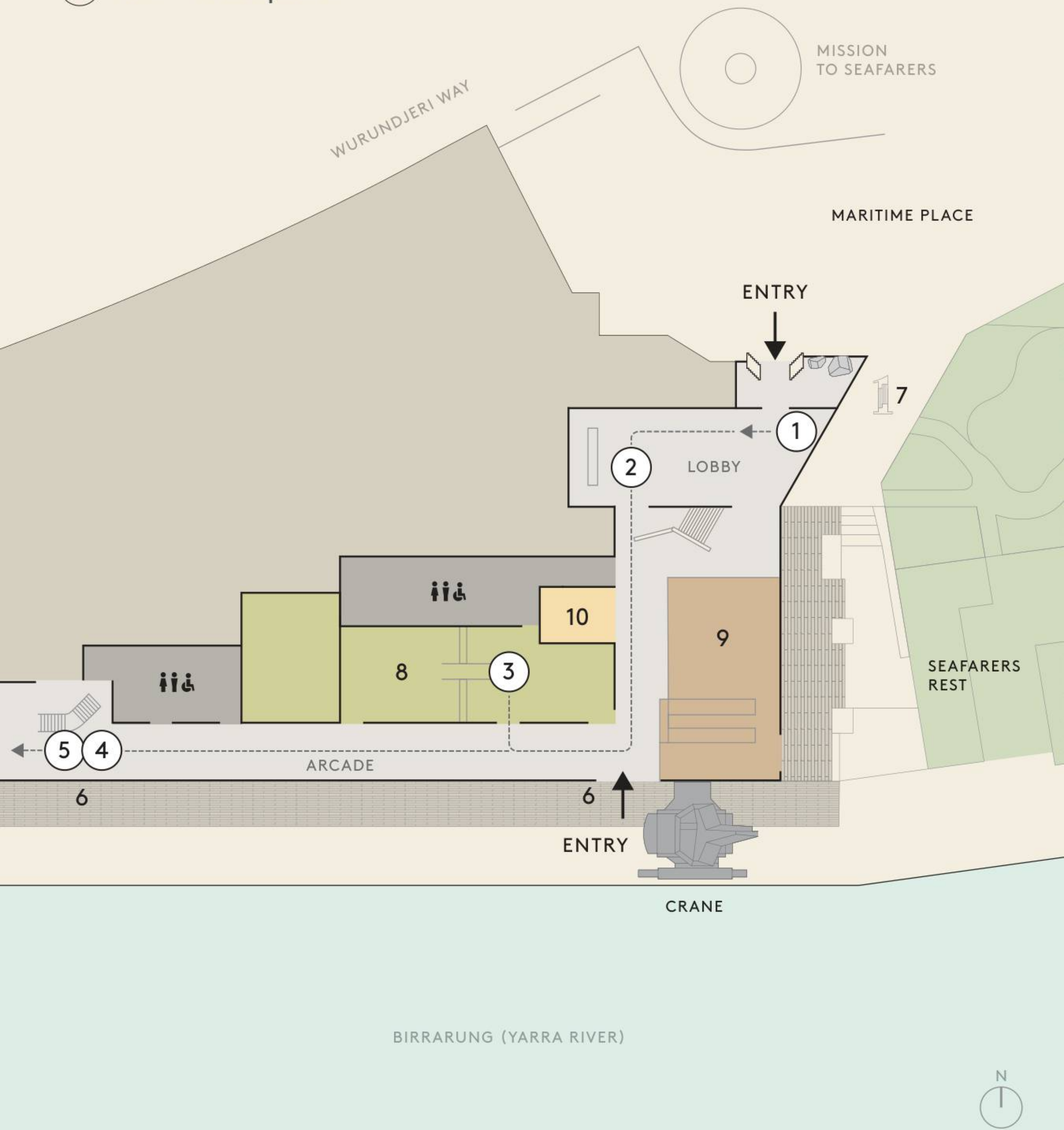
- 1 *Syntheses*
- 2 *Salted Souls*
- 3 *Suspended Landscape*
- 4 *Milŋiyawuy (The Milky Way)*
- 5 *The Ray Fin*

EAT/DRINK

- 8 From Here by Mike
- 9 Crane Bar & Lounge
- 10 Neighbours Cafe

INTERPRETIVE

- 6 History panels
- 7 The '1' Sculpture



1 HOTEL MELBOURNE ART PROGRAM

Discover 'REGENERATION: The Art of Renewal,' a striking public art program celebrating Melbourne as Australia's arts and cultural capital. Created in collaboration with Riverlee, DarkLab and ODO, this collection features works by Australian and First Nations artists and one international artist, each responding to themes of heritage, ecology and place.

Spanning the hotel's ground floor within the historic Goods Shed No.5, these five works invite different sensory experiences through architectural sculptures, ceiling installations and living plant elements.

The guiding question: What does renewal look like in a world that is constantly shifting?



1 ART PROGRAM

JAMIE NORTH *Syntheses*

In the hotel's light-filled lobby, Jamie North's eroded concrete columns blur the line between architecture and sculpture. Two towering columns of concrete, slag and native plants mirror the structural supports of the hotel itself, creating a dialogue between built form and natural regeneration. The contrast between the exposed steel rebar and soft plant life creates a meditation on time and adaptation, as native plants slowly claim the structure and transform it over time.

 Hotel Lobby



VANESSA BARRAGÃO *Salted Souls*

Greeting guests at reception, this richly textured wool tapestry by Portuguese artist Vanessa Barragão draws inspiration from Victoria's rockpools and seaweed formations. Crafted entirely by hand using crochet, felting and 60kg of upcycled textile waste, the piece transforms discarded materials into something beautiful and alive. Barragão named it *Salted Souls* to evoke the lasting impressions that landscapes leave on us, like salt crystallising over time.

 Hotel Reception



JAMIE NORTH *Suspended Landscape*

In the restaurant, Jamie North returns with a sculptural room divider that feels more like a living landscape. Using cast concrete forms made from blast furnace slag, coal ash and scoria rock, the rock forms appear to hover in mid-air with climbing plants establishing themselves below, inviting the natural world to interact with the built one. Native vines wrap around rebar supports, shifting the space as they grow—a quiet, ongoing act of renewal.

 From Here by Mike, restaurant



NAMINAPU MAYMURU-WHITE

Milŋiyawuy (The Milky Way)

Seven hand-painted Larrakitj memorial poles rise beside the staircase, rendered in traditional Yolŋu earth pigments. Their celestial design references the Milky Way and ancestral songlines, connecting the cosmos to the Birrarung. Each pole varies in height and detail, inviting you to move left and right and discover different perspectives. This installation bridges Indigenous knowledge, spiritual memory and place-based storytelling, grounded by pebbles from Arnhem Land that maintain connection to Country.

 Arcade, past restaurant



YHONNIE SCARCE *The Ray Fin*

Above, 1,100 hand-blown glass eels hang from the ceiling, recreating two eel migration paths from Queensland waters down to the Birrarung. They move gently with air currents, transforming the ceiling into a living representation of this ancient journey from sea to freshwater. The glass medium itself represents resilience—both fragile and strong, much like the survival of traditional knowledge. Through this ethereal installation, Indigenous artist Yhonnie Scarce draws on deep connections to Country, reflecting how traditional knowledge adapts and endures within modern landscapes.

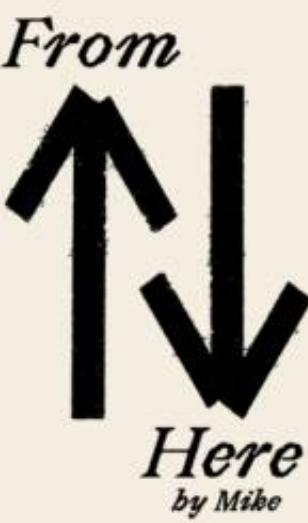
 Arcade, end



FROM HERE BY MIKE

From Here by Mike is the signature all-day dining restaurant by celebrated chef Mike McEnearney. A thoughtful celebration of farms, wineries and places that nourish the table. The menu features ingredients grown, gathered and crafted with care. Throughout the restaurant, original Oregon timber beams from the Goods Shed No.5 create an embracing canopy above diners. Touch their weathered texture—much of the character remains, creating a tangible connection between past and present.

BREAKFAST	LUNCH	DINNER
Weekdays 7am to 10.30am	Weekdays, Saturday 12pm to 3pm	Monday to Thursday 5.30pm to 10pm
Weekends 7am to 11am	Sunday 12pm to 3.30pm	Friday to Saturday 5.30pm to 10.30pm
		(Sunday closed)



CRANE BAR & LOUNGE

The heart and soul of 1 Hotel Melbourne. Named after the heritage crane visible through the skylight above, this is where connections spark and conversations thrive. Beneath your feet, 12,000 pieces of recycled Victorian blackbutt timber tell a story of renewal. Surrounded by lush greenery, this vibrant social hub offers organic cocktails, beautiful Australian wines and fresh, seasonal snacks. Adjacent, the Jenga-inspired staircase crafted from decommissioned railway bridges rises to Upstairs—a hidden-in-plain-sight cocktail bar.

HOURS

Sunday to Wednesday
2pm to 10pm

Thursday to Saturday
2pm to late

CRANE
BAR & LOUNGE



NEIGHBOURS CAFÉ

Neighbours Café offers fair-trade, organic coffee expertly brewed into lattes, espressos and specialty drinks, alongside signature tea blends and fresh cold-pressed juices. The menu features wholesome light meals including seasonal superfood bowls, artisanal toasts and house-baked treats.

As you wait for your coffee, look up to see the red heritage trusses that have been carefully restored—take in the double-height volume of the Goods Shed No.5 that was once bustling with maritime activity.

HOURS

Monday to Friday
6am to 2pm

Saturday to Sunday
7am to 2pm





ADAPTIVE REUSE

2,109 catalogued and restored items from the original Goods Shed and surrounding site:

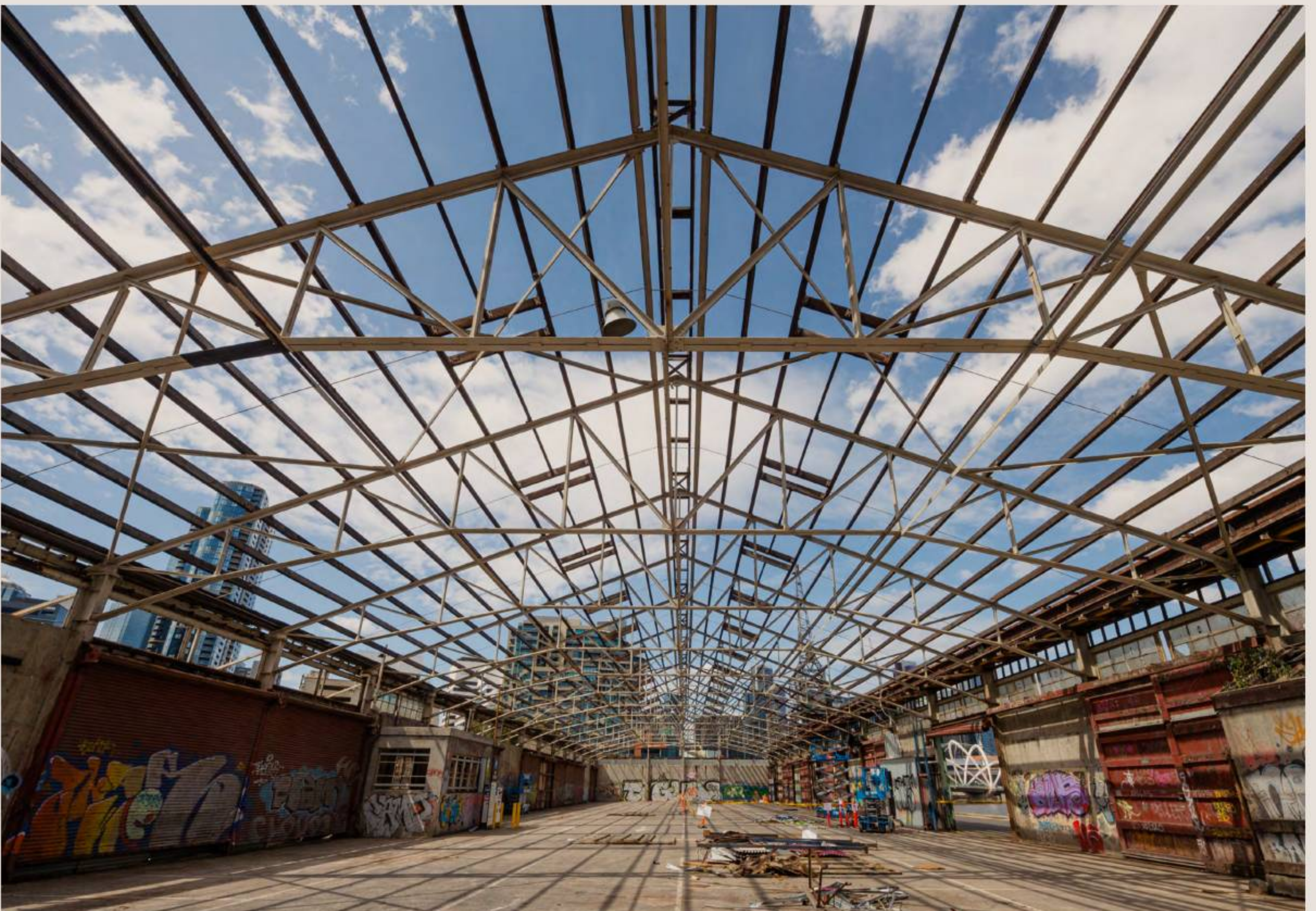
1,944 bluestone pavers

20 timber sliding doors (partially salvaged)

40 steel trusses

105 steel window frames

2 km of timber purlins



Goods Shed No.5 refurbishment

ADAPTIVE REUSE

4,500sqm of recycled and reclaimed timber:

Reception desk, naturally fallen trees

Guest rooms, discarded railway sleeper feature walls

Guest room door signage, salvaged wharf timber

Lounge feature staircase, decommissioned railway bridges

Lounge feature flooring, recycled blackbutt timber

1 Homes lobby, discarded railway sleepers feature walls

Hotel entry, recycled ironbark timber



Goods Shed No.5 reclaimed timber

ADAPTIVE REUSE

The restaurant features timber portals crafted from reclaimed Oregon timber beams salvaged directly from the Goods Shed. The design teams worked to keep as much of the original texture as possible.



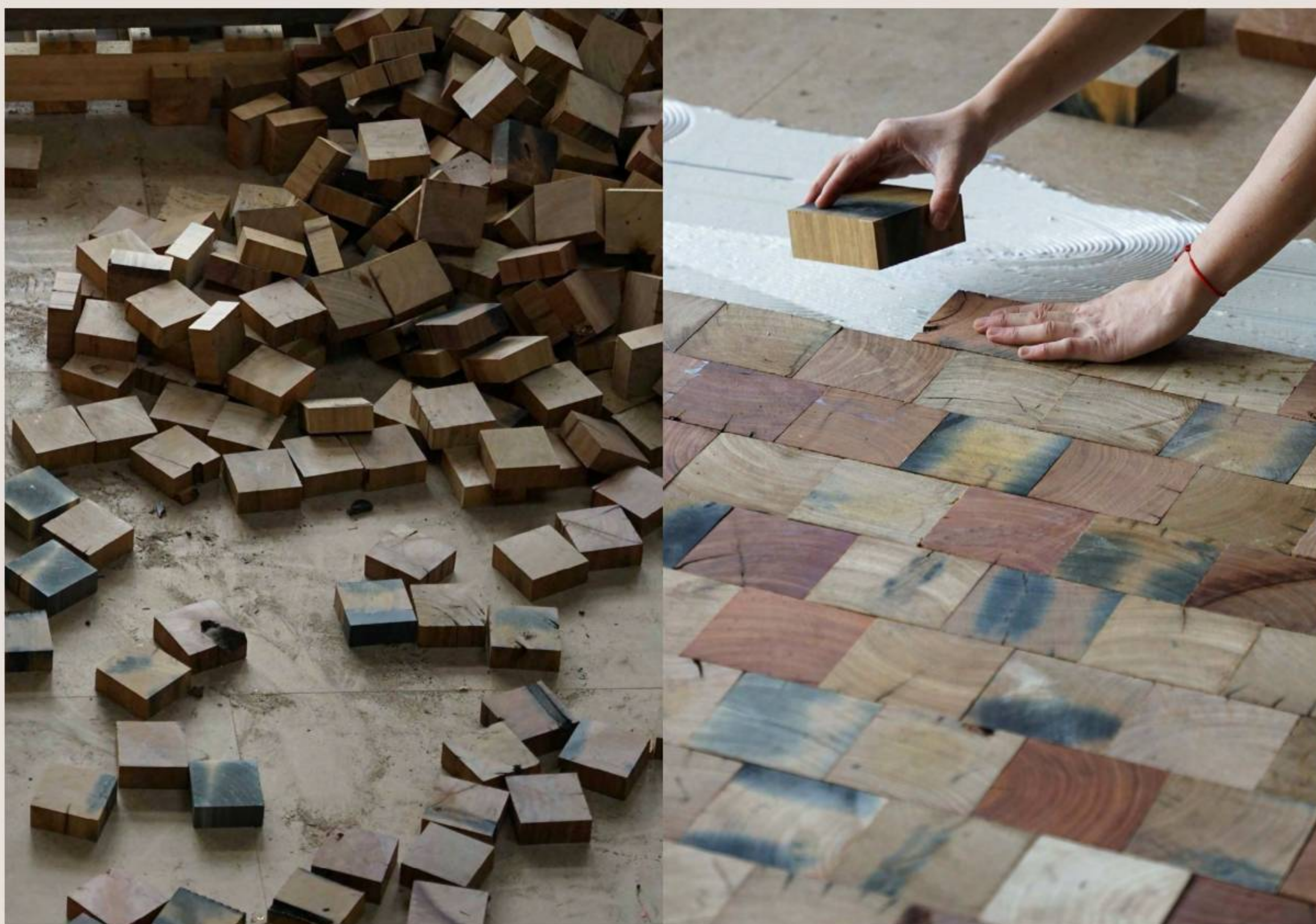
Removal and salvaging of timbers from Goods Shed No.5



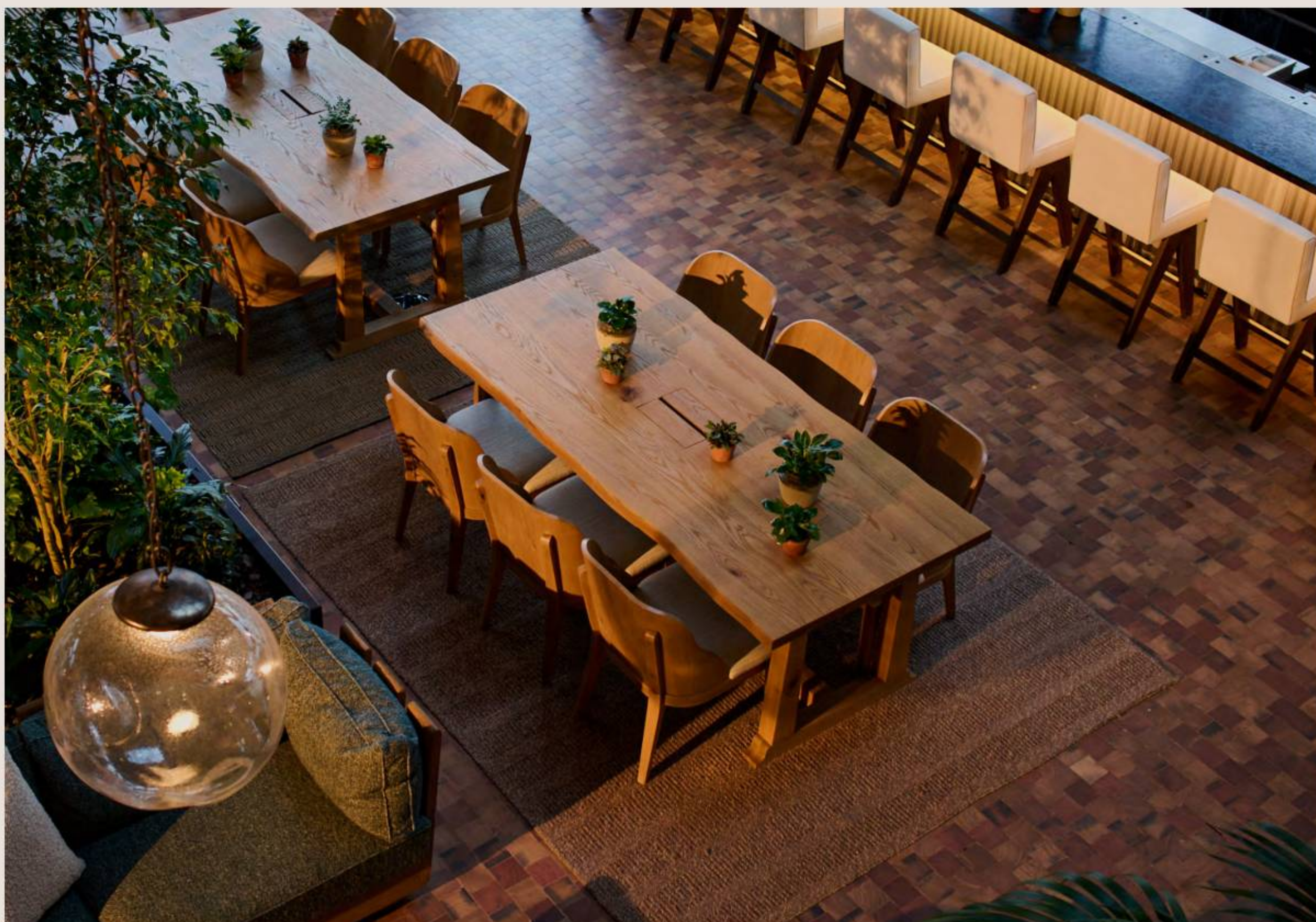
Porticoes within From Here by Mike restaurant

ADAPTIVE REUSE

12,000 recycled blackbutt and tallowwood timber offcuts from Victoria create 120m² of unique lounge flooring.



Installing recycled blackbutt flooring, 1 Hotel Melbourne Crane Bar



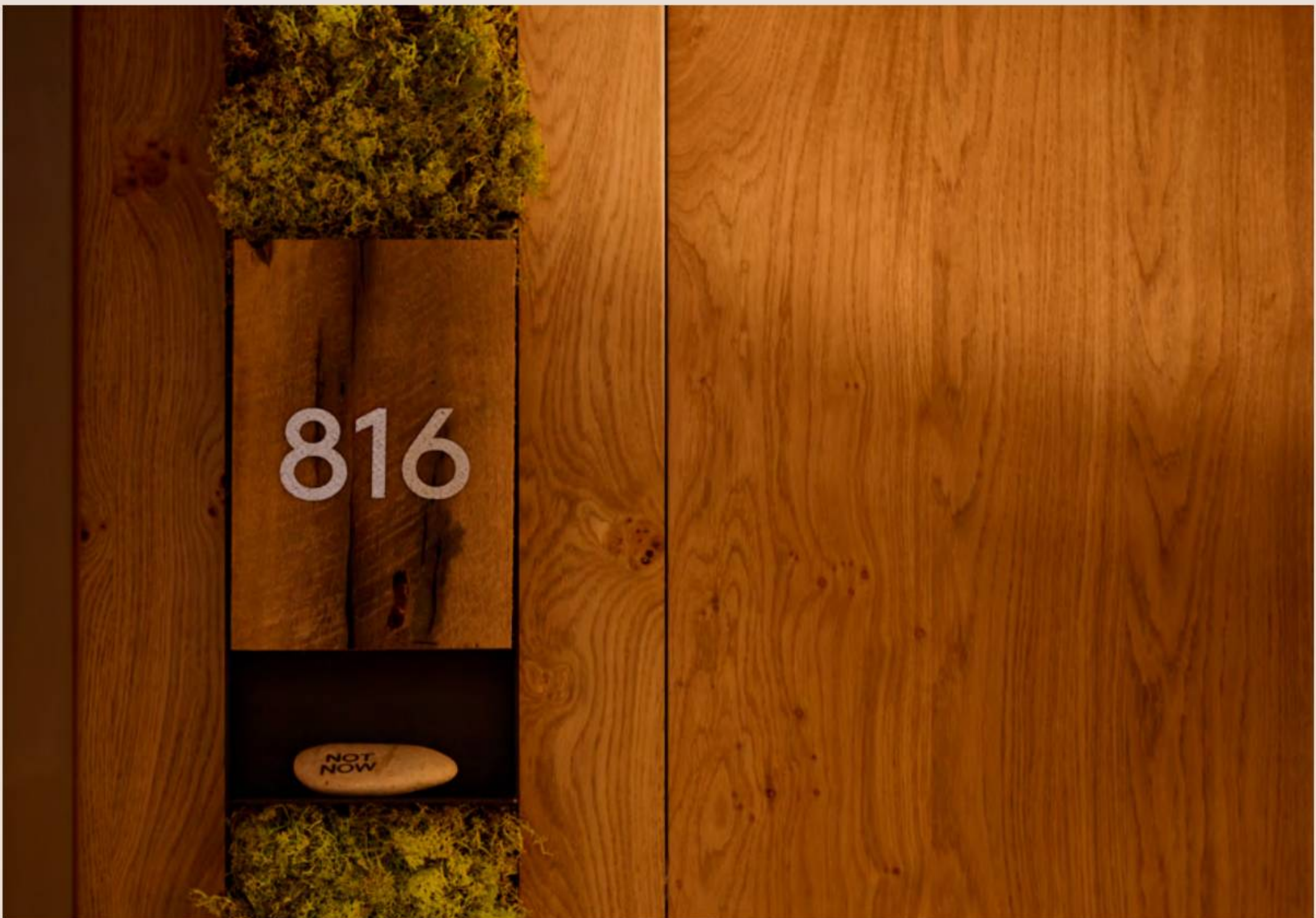
Completed flooring, 1 Hotel Melbourne Crane Bar

ADAPTIVE REUSE

Guest room door signage features salvaged wharf timbers discovered during the 2019 site remediation works. The distinctive pattern was created by Teredo Navalis—naval worms that had tunneled through the subaquatic piers.



Salvaging historic wharf timbers

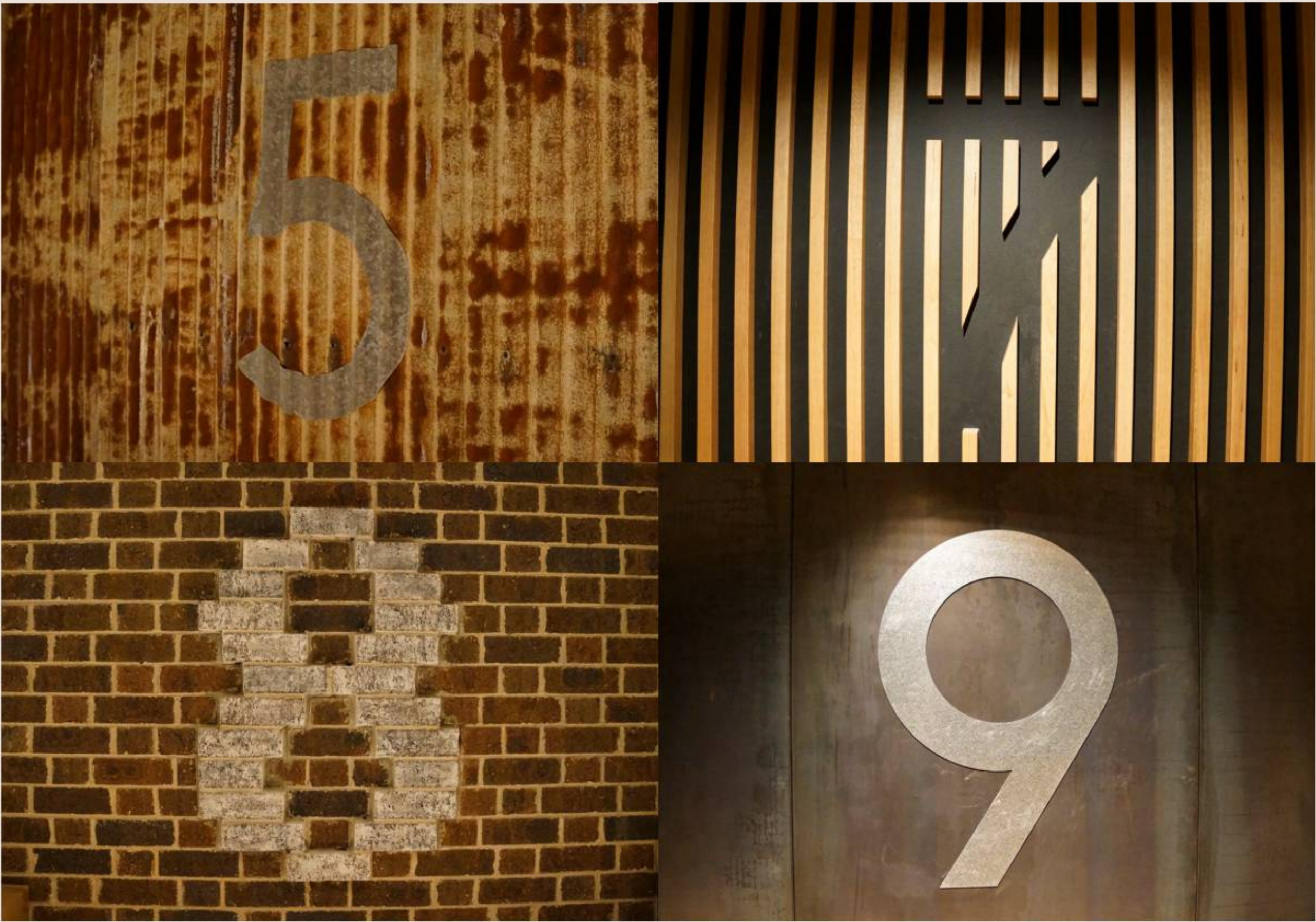


1 Hotel Melbourne guest room signage

ADAPTIVE REUSE

Every guest floor lobby is conceived as a space where you arrive home—every level is presented as a residential front yard depicting prominent materials used across Victoria over the years. This showcases a transition of anthropological progression through time.

Level 4	Wirebrush recycled Oregon shiplap cladding
Level 5	Repurposed Victorian farm shed corrugated steel
Level 6	Charred black spotted gum
Level 7	Victorian ash timber battens
Level 8	Hawthorn black bricks—iconic brick that gives so many of Melbourne’s inner city homes their distinct character
Level 9	Blackened steel
Level 10	Blackened steel



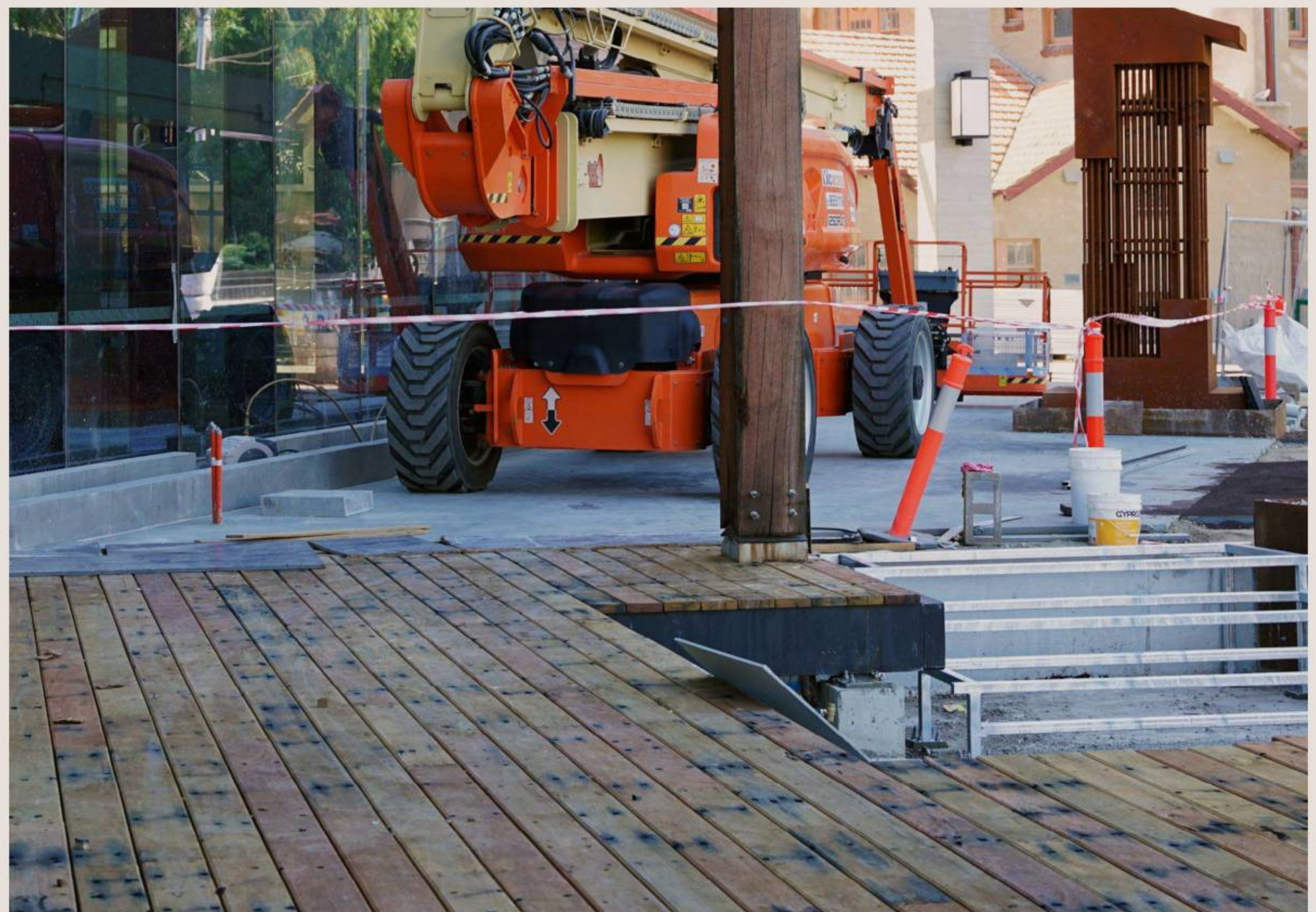
1 Hotel Melbourne guest lobbies, level identifiers

ADAPTIVE REUSE

Outdoor deck extends along the arcade and around the lounge, made from recycled railway sleepers (the core of the timber, with the skins used for the guest rooms as bedheads).



Jaks Timber reconditioning recycled railway sleepers



1 Hotel Melbourne outdoor decking

COLLABORATORS

DEVELOPER



ARCHITECT



HOTEL INTERIOR



LANDSCAPE ARCHITECT



ART PROGRAM



CONSTRUCTION





[1HOTELS.COM/MELBOURNE](https://1hotels.com/melbourne)